

Budha Dal Public School Patiala (11 September 15)

UNIT-I
Class-VI
Mathematics

Marks: 90

Time: 3 hrs.

All questions are compulsory.

SECTION - A

Note: Each question carry 2 marks.

Q1) Write the number name of 5943045 in international system and put

commas in an appropriate positions.

Q2) Write all multiples of 13 lying between 60 and 130.

Q3) Arrange -3, 34, -15, 0, 2 in an ascending order.

Q4) Round off the following numbers to nearest thousands.

- a) 245364
- b) 5320

Q5) Write the two whole numbers occurring just before 1010101.

Q6) Using number line, subtract (-4) from 10.

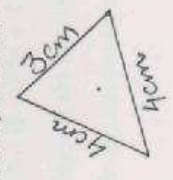
Q7) Write in Roman Numerals

- a) 485
- b) 623

Q8) a) Is (79, 83) a twin prime number or not?

b) What is the smallest composite number?

Q9) Classify the triangles.



Q25) a) From greatest number by using the digits 5, 0, 2, 6, 7

b) Write expanded form of 43013

Q26) a) Find the L.C.M. of 48, 96 and 24.

b) Is $x^2 - 9$ a linear equation?

Q27) The following are the sales figures of a shoe store. Draw bar graph. Use suitable scale.

Days	Monday	Tuesday	Wednesday	Thursday	Friday	Saturday
Number of shoes sold	250	100	300	150	400	200

a) In which day the minimum numbers of shoes were sold?

Q28) Name the angle formed between the following direction:

a) North and South

b) West and East

Q29) Write the equation and find out and answer:

a) The sum of numbers y and 25 is equal to 55. What are the numbers?

b) The product of numbers z and 5 is equal to 20. What are the numbers?

Q30) Find the prime factorisation of the following numbers:

- a) 360
- b) 1000

Q10) Prepare a frequency table of the following data.

The marks of 10 students obtained in the test is as follows:

60, 75, 75, 72, 56, 42, 60, 65, 75, 78 $(2 \times 10 = 20)$

SECTION - B

Note: Each question carry 3 marks.

Q11) Estimate the following to nearest hundreds

$$1356 + 21431 + 5446$$

Q12) Evaluate $1002 \times 42 + 1002 \times 58$ by using suitable property.

Q13) Simplify: a) $15 \times (-15)$

b) $(-49) \times (-7)$

c) $270 + (-120)$

Q14) Solve $y + 2 = 5$ by trial and error method.

Q15) The weekly sales of fridges in a shop are given for a week. Draw a pictograph of the following data and use appropriate scale and symbol:

Days	Monday	Tuesday	Wednesday	Thursday	Friday	Saturday	Sunday
No. of Fridge	10	15	25	10	30	15	35

Q16) Write the factors and coefficient of $16a^2b$.

Q17) Simplify $60 + 4 \text{ of } 12 + (19 - 8) - 7 \times 5$

Q18) Rohan is four times as old as of his younger brother. The sum of their present age is 25. What is the present age of Rohan.

Q19) Name the angles as acute, obtuse, right, straight, reflex or complete.

a) 120° b) 89° c) 275°

Q20) Write the algebraic expression.

a) 15 more than 6 times a number y .

b) subtract 7 from product of x and y .

SECTION - C

Note: Each question carry 4 marks.

Q21) a) A box of icecreams has 3 rows. In each box, these are 16 icecreams.

How many total ice-creams are there?

b) Find the place value of 4 in 204561.

Q22) Fill ups:

a) _____ is a factor of every number.

b) Opposite of -20 is _____.

c) There are two types of symbols in Algebra _____ and _____.

d) Collection of information in the form of numerical figures are called _____.

Q23) Three containers contain 20 litres, 30 litres and 40 litres of milk. Find

the maximum capacity of container which can measure the milk of three containers exact number of times.

Q24) Check by divisibility rules

a) Is 129440 is divisible by 6

b) Is 114028 is divisible by 8